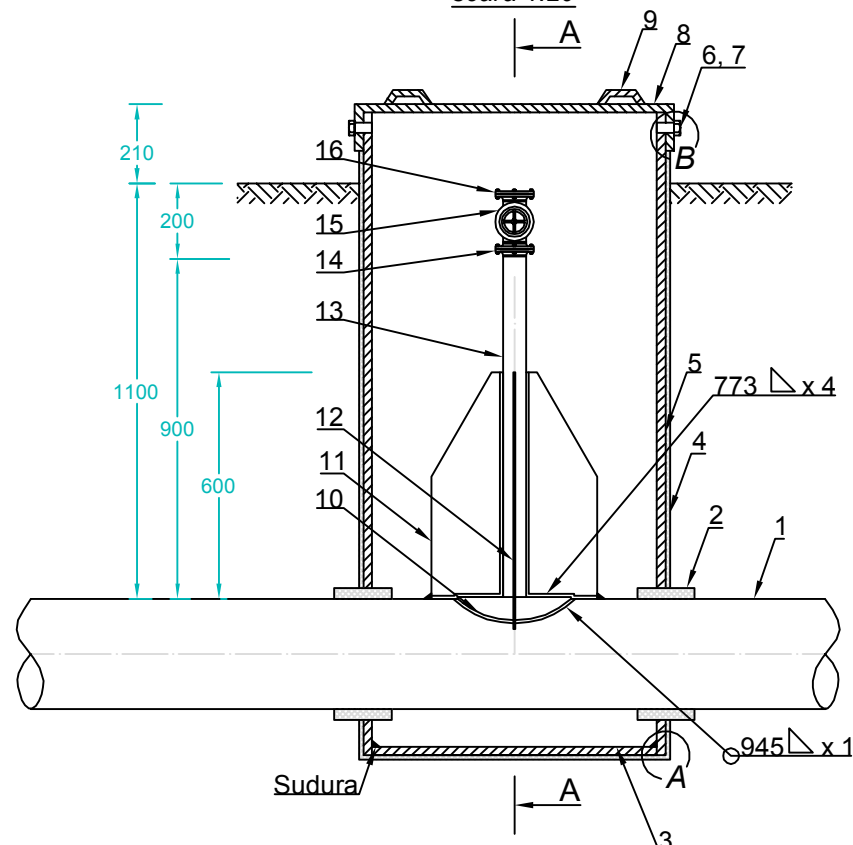


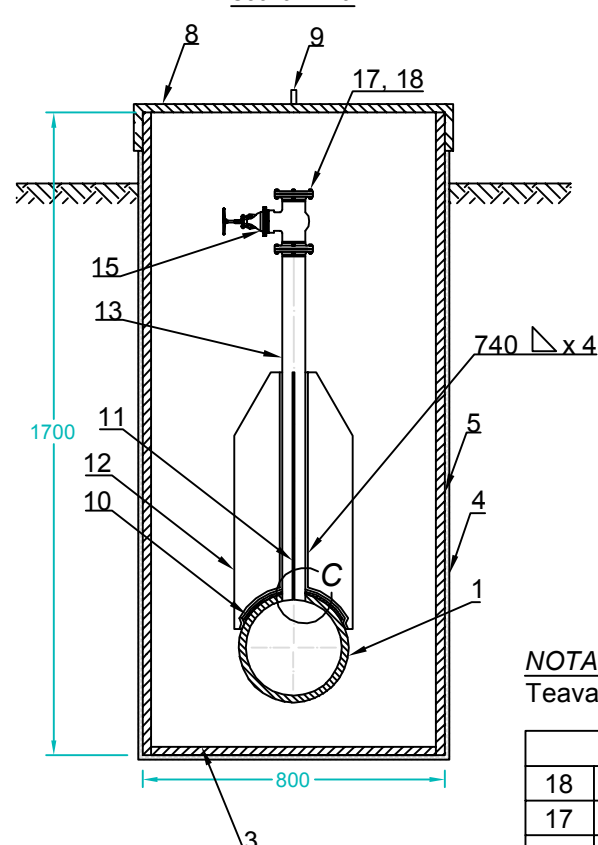
DECONGELATOR DN 50, PN 64

scara 1:20



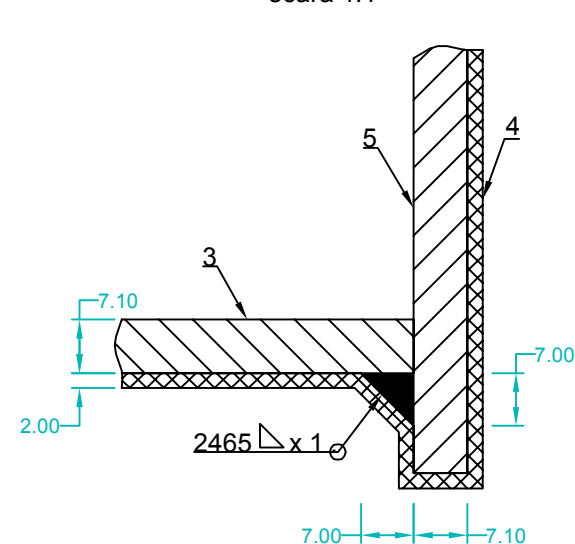
VEDERE A - A

scara 1:20



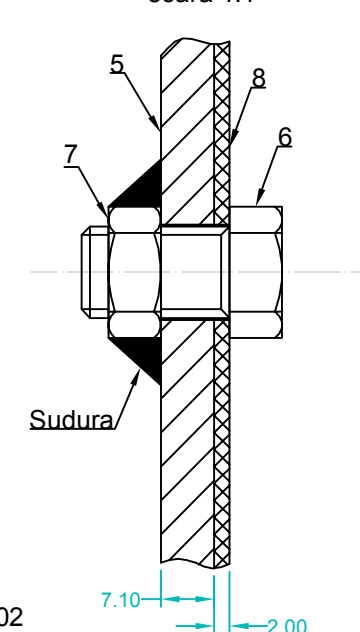
DETALIU "A"

scara 1:1



DETALIU "B"

scara 1:1



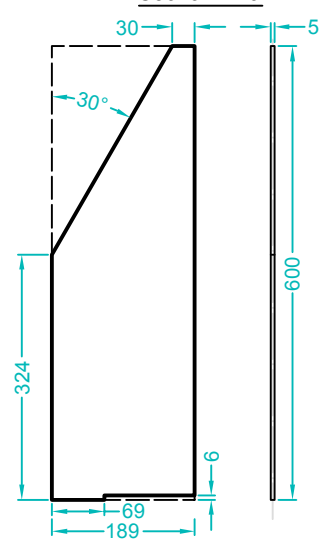
NOTA:

Teava de refulare (nr. poz. 13) va fi izolata prin vopsire conform SR EN ISO 12944:2002

GREUTATE [Kg]					357.45
18	Piulita M16	STAS 8121-3:84	16		
17	Prezon	STAS 8121-2:84	8		M16 - 90
16	Flansa oarba DN 50, PN 64	SR EN 1092-1:2008	1	P285 Group 8E2	
15	Robinet DN 50, PN 64	SR EN 1984:2010	1	A216 + 13Cr	
14	Flansa cu gat sudabil DN 50, PN 64	SR EN 1092-1:2008	1	P285 Group 8E2	
13	Teava de refulare	SR EN ISO 3183:2013	1	L 360N	Ø60.3 x 7.1mm, L= 0.90m
12	Nervura de consolidare		2	S 235 J2	Tb 680 x 127 x 5mm
11	Nervura de consolidare		2	S 235 J2	Tb 600 x 189 x 5mm
10	Placa de intarire		1	S 235 J2	Tb 301 x 301 x 5.6mm
9	Maner		2	OL 37.2K	
8	Capac camin	SR EN 10029:2011	1	OL 37.2K	Tb 810 x 810 x 2mm Ø810 x 123 x 2mm
7	Piulita M12	SR EN ISO 4034:2013	2	OLC 25	SR EN 10083-2:2007
6	Surub M12 x 35	SR EN ISO 4018:2011	2	OLC 35	SR EN 10083-2:2007
5	Manta camin	SR EN ISO 3183:2013	1	L 245N	Ø800 x 1700 x 7.1
4	Invelis bitum	STAS 2484:85			
3	Fund camin	SR EN 10029:2011	1	OL 37.2K	Tb 785 x 785 x 7.1mm
2	Inel distantier electroizolant		2		
1	Conducta	SR EN ISO 3183/2013	1	L 360N	
POZ.	DENUMIREA	STAS	BUC.	MATERIAL	OBSERVATII

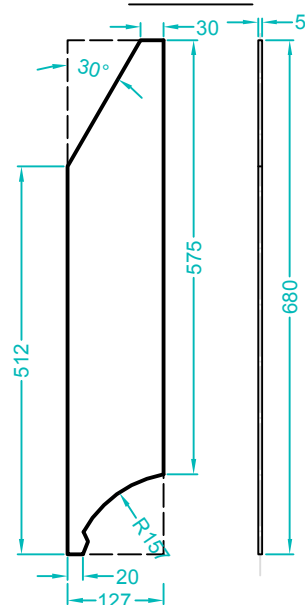
Detaliu 11

scara 1:10



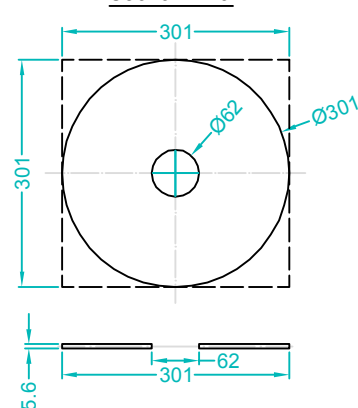
Detaliu 12

scara 1:10



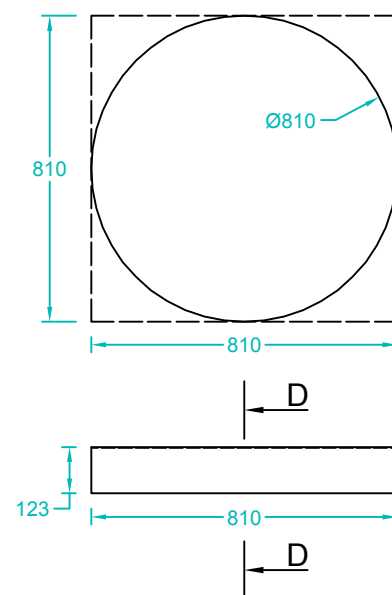
Detaliu 10

scara 1:10



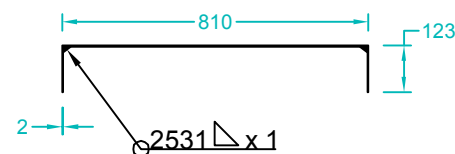
Detaliu 8

scara 1:20



SECTIUNE D - D

scara 1:20



Verificator/ Expert	Nume	Semnatura	Cerinta	Referat / Expertiza Nr. / Data
S.C. SNIF PROIECT S.A. Targoviste Numar de inmatriculare J15/925/2005				Beneficiar: S.C. CONPET S.A. PLOIESTI
Specificatie	Nume	Semnatura	Scara: 1:20 1:10 1:5	"Inlocuire conducta de transport titei Ø5 9/16" Statie Ghelinta - Rampa Imeci pe tronsonul Pârâu Sohodol - depozit vechi Ghelinta, in lungime de cca. 4.800m"
Sef proiect	Ing. Costea Paul			
Desenat	Ing. Radu Florin		Data: 2015	Decongelator DN 50, PN 64
Proiectat	Ing. Costea Paul			
				Pr. nr. 304
				Faza PT+CS+D
				Pl. nr. 15